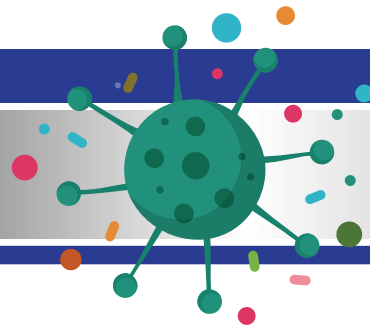


# Virgin Islands Department of Education

## Computer Specifications



As requested, Computer Specification	Minimum Requirement
Operating System	Windows 10 Pro or Enterprise 64 bit
Monitor Size	Desktop 19" or bigger/laptop 15"
Network Port	<a href="#">10/100/1000 must have up to 1GB speed</a>
Processor Type	Minimum: Intel i5 Processor or i7 Processor
Memory (RAM)	Minimum: 8GB and up
Hard drive Capacity	Minimum: 500GB and up
Graphic Card	4GB video or higher
Warranty	3 Years Parts and Labor
Graphic Card Brand	Intel, Radeon, Quadro or similar
WIFI	Must be WIFI 6 Capable
Laptop Screen Size	15" or bigger
<b>When Ordering a Surface Pro</b>	<b>Additional Items must be included</b>
	USB to Network Cable
	Outer Box Case
	Laptop Padded Support Bag
<b>For docking station and Additional Monitor attachment</b>	<b>Other items must be included in the package</b>
	DP to VGA Cable/Adapter
	Dual Lift Stand
<b>Tablets Specifications</b>	<b>Minimum Requirement</b>
<b>Google License</b>	<b>Per Device must be installed before shipping and a copy of the license(s) sent to <a href="mailto:warranty@vide.vi">warranty@vide.vi</a> "for documentation purposes"</b>
Android OS	9.0 "Pie" or better
Associated Item	Stylus Pen
Processor	Android Intel Core eMMC or better/Similar
Memory	Minimum: 8GB or better
WIFI	Must be WIFI 6 Capable
Storage	64GB or better
Size	13 inches or bigger
Graphic	UHD or better
Screen Type	Full HD 1366X768 or better
Protection	Protective Case
Warranty	3 years parts and Labor

### **Printer Minimum Specifications**

Functions - Print, copy, scan, fax, email

Print Speed –Up to 28 ppm

Print Speed black - 8.9sec or better

Print color - 9.8 sec or better

Network Port – Standard Gigabit Ethernet

Print Technology – Laser

Additional Port - 1 Hi-Speed USB 2.0; 1 Gigabit Ethernet 10/100/1000 Base-TX; 1 Easy-access USB

Minimum Compatibility – All Windows, MAC OS, SUSE Linux

Memory standard – 256MB NAND Flash, 256 MMB DRAM

Warranty – 1yr limited hardware warranty

Cables – 10ft. USB and Network Cable

Energy Efficiency – Energy star qualified; CECP

### **Copier Minimum Specifications**

Memory: RAM storage space 1GB or better

Toner: All Original Manufacturer Toner

Laser: can print up to 50 ppm

Graphic: a resolution of 2400 x 2400 dpi, and color management is essential

Scanning: basic document scanning, 600 pixels, for high resolution 4800 pixels

Printing Speed: minimum of 50 to 60 ppm for SMBs

Production: ranging from 2400 x 1200 dots per inch (dpi) for color copies to 9600 x 600 dpi

Copier Type: Color MFPs (Multifunction Printers)

a standard web-based interface that enables remote printing, file sharing, device monitoring, settings updates and address book entry, right from your desktop

Voltage: 120V

Additional Features: includes-email, USB's, and cloud-based services