

ALFREDO ANDREWS ELEMENTARY SCHOOL
LANDSCAPING

CONTRACTOR: _____

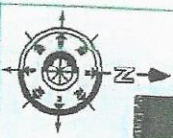
DATE: _____

LEGEND

- TRIM GRASS TO 2" MAX. N/A
- - - TRIM OVERGROWN FENCE LINE



EAST ← MELVIN EVANS HIGHWAY → WEST



← TO MELVIN EVANS HIGHWAY

TO CENTERLINE ROAD →



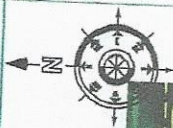
RICHARDO RICHARDS LANDSCAPING

CONTRACTOR: _____

DATE: _____

LEGEND

- TRIM GRASS TO 2" MAX. NAP
- - - - TRIM OVERGROWN FENCE LINE

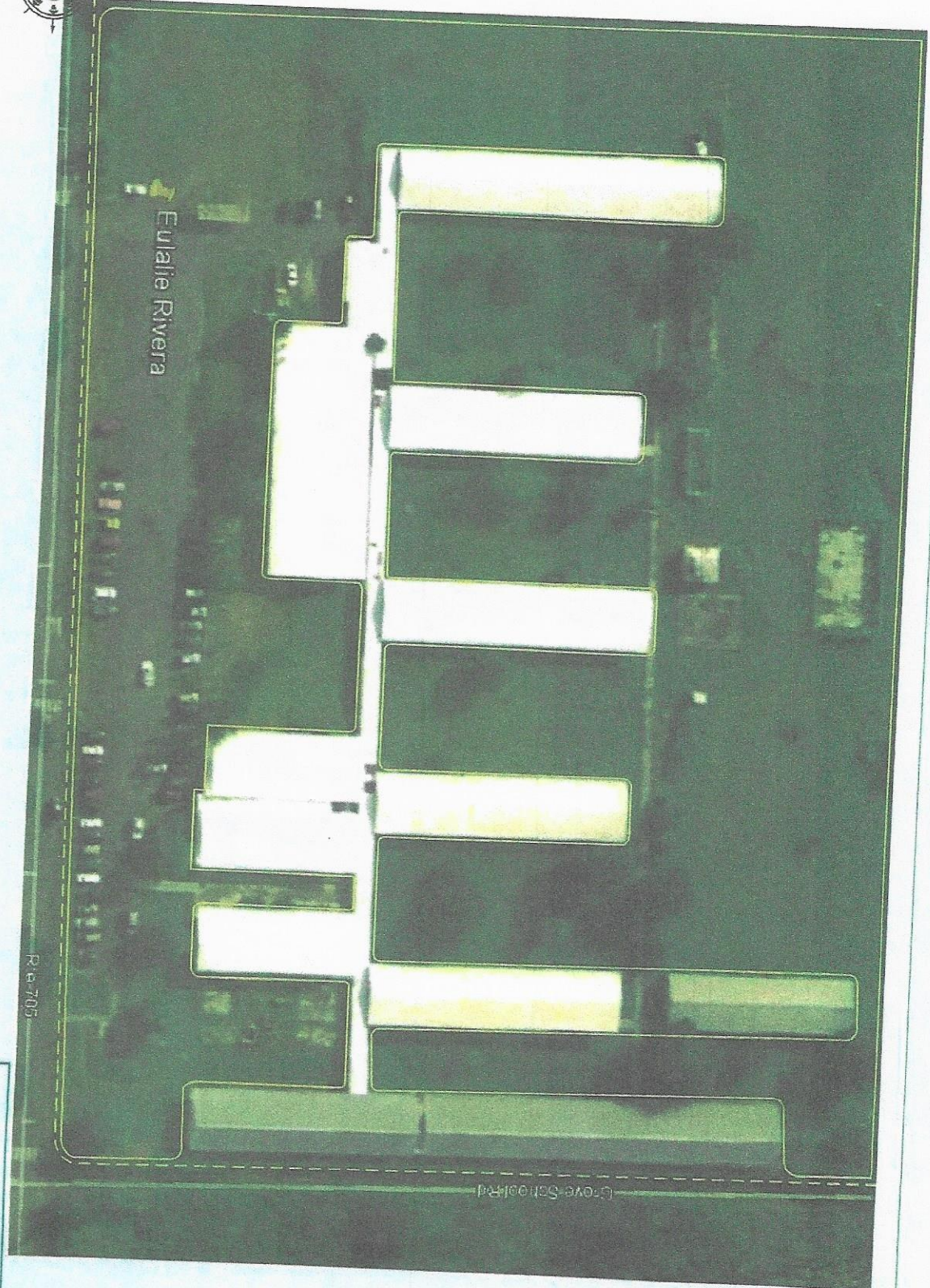


EULALIE RIVERA ELEMENTARY SCHOOL
LANDSCAPING

CONTRACTOR: _____

DATE: _____

- LEGEND**
- TRIM GRASS TO 2" MAX. NAP
 - TRIM OVERGROWN FENCE LINE





ARTHUR A. RICHARDS JUNIOR HIGH SCHOOL
LANDSCAPING

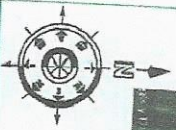
CONTRACTOR: _____

DATE: _____

LEGEND

--- TRIM GRASS TO 2" MAX. H.P.
--- TRIM OVERGROWN FENCE LINE





WEST ← — CENTERLINE ROAD — → EAST



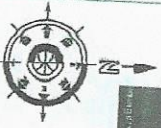
ADULT ED SCHOOL LANDSCAPING

CONTRACTOR: _____

DATE: _____

LEGEND

- TRIM GRASS TO 2" MAX. NAP
- - - - TRIM OVERGROWN FENCE LINE



ALTERNATIVE EDUCATION SCHOOL
(THEODORA DUNBAVIN) LANDSCAPING

CONTRACTOR: _____

DATE: _____

LEGEND

- TRIM GRASS TO 2" MAX. NAP
- - - TRIM OVERGROWN FENCE LINE





DEPARTMENT OF EDUCATION
HEADQUARTERS LANDSCAPING

CONTRACTOR: _____

DATE: _____

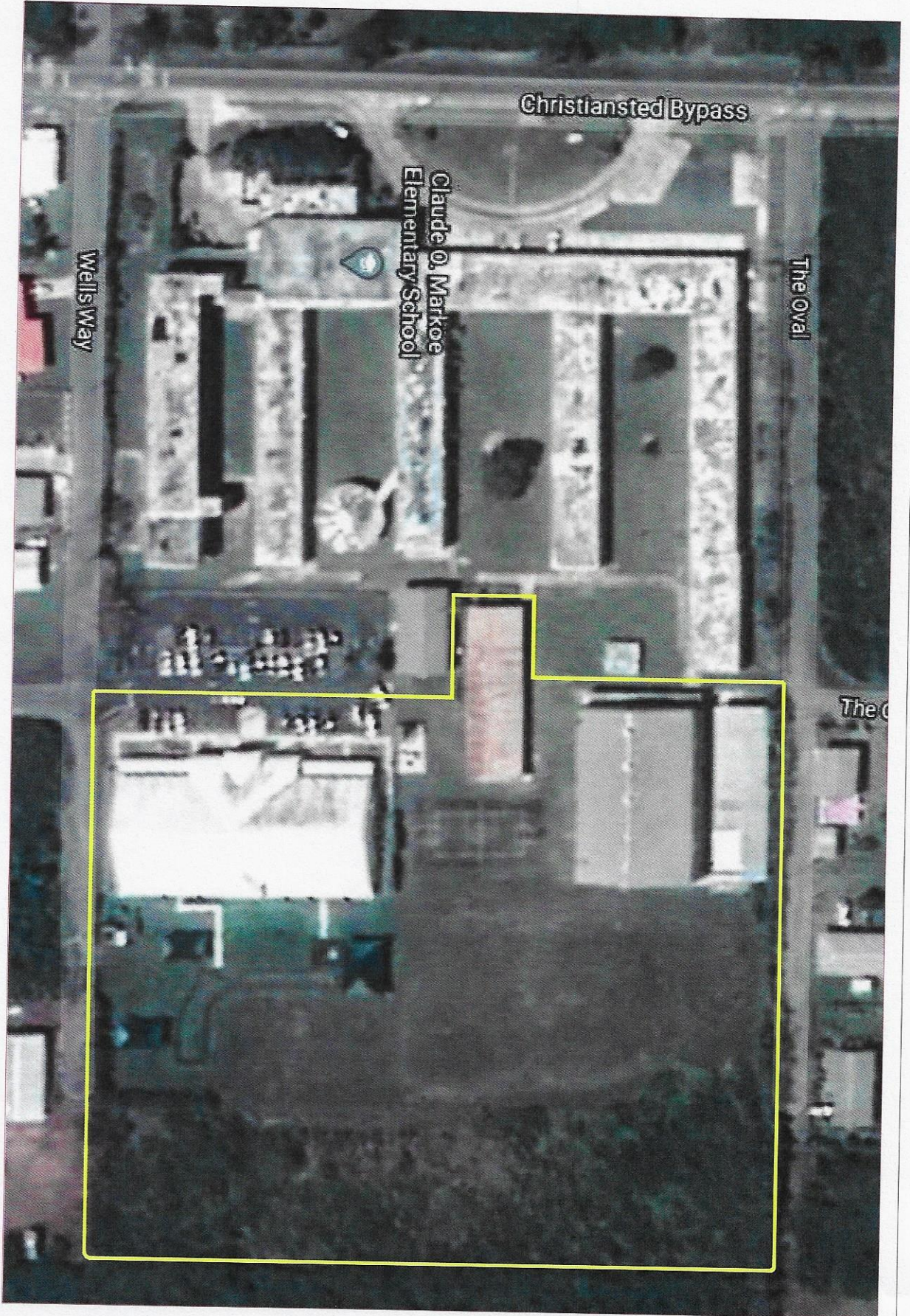
LEGEND

—— TRIM GRASS TO 2" MAX N.A.P.
- - - - TRIM OVERGROWN FENCE LINE





EAST ← CENTERLINE ROAD → WEST



CLAUDE O. MARKOE SCHOOL LANDSCAPING - AREA-2

CONTRACTOR: _____

DATE: _____

LEGEND

- TRIM GRASS TO 2" MAX. MAP
- - - TRIM OVERGROWN FENCE LINE